



Foothills Hotel by Richard Requa.

**IN THIS ISSUE**

|                               |   |
|-------------------------------|---|
| Ojai Lecture                  | 1 |
| President's Letter            | 2 |
| Bookmarks                     | 3 |
| Modernism Preview             | 4 |
| SAH/SCC Publications for Sale | 5 |

## Ojai: A Postcard History

SAH/SCC Lecture & Book Signing  
Saturday, February 5, 2011, 1PM

Join SAH/SCC on Saturday, February 5, 2011, at 1PM at the Santa Monica Public Library (Moore Ruble Yudell, 2006) for a lecture and slide presentation on the architecture of Ojai. Craig Walker, former SAH/SCC Board Member and co-author of the new book *Ojai: A Postcard History* (Arcadia, 2010), will share images and insights about the architecture of Ojai, past and present.

The presentation will draw heavily from Ojai's legacy of Mission Revival architecture and feature the work of such architects as Mead and Requa, Wallace Neff, Carlton Winslow, Arthur B. Benton, Robert Stacy-Judd, Arthur C. Martin, Roy Wilson, George Washington Smith, Julia Morgan, and J. Cleveland Cady. Emphasis will be given to rarely seen or lost commercial and institutional buildings documented through postcards.

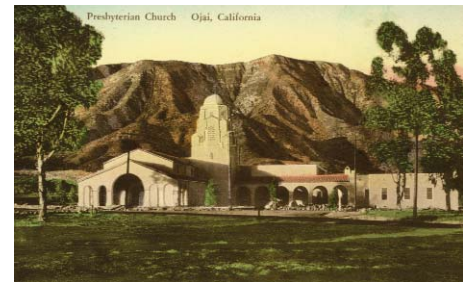
The book project was organized by the Ojai Valley Museum, with many of the postcards coming from its own extensive collection. Collectors living in the Ojai Valley also donated to the project.

Craig Walker is a life-long resident of Ojai and the son of Case Study House architect Rodney Walker. His lecture is sure to offer an insider's view of this very special California community. The new book, *Ojai: A Postcard History*, will be available at the event for sale and signing by the author.

*Ojai: A Postcard History: Saturday, February 5, 2011; 1PM; Martin Luther King, Jr. Auditorium, Santa Monica Public Library, Main Library, 601 Santa Monica Blvd.; free; 310.458.8600.*



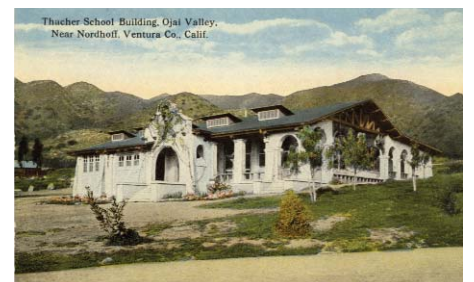
Ojai Valley Country Club by Wallace Neff.



Presbyterian Church by Carlton Winslow.



Foothills Hotel by Richard Requa.



Thacher School by Arthur B. Benton.

# SAH/SCC President's Letter

Another New Year, another 365 days on which to experience architecture! For more than 20 years, SAH/SCC has been creating opportunities for members and the public to learn about and experience the built environment in Southern California. With so many active educational institutions, preservation groups, and historical societies in and around Los Angeles, it seems the architectural enthusiast can always find something interesting to do.

To this end, SAH/SCC has historically prepared a bi-monthly calendar of events for its newsletter. This curated selection of talks and tours focusing on architecture, design, photography, and history was culled from museums, historical societies, schools and universities, libraries, and public and private organizations. SAH/SCC News' editors—from Richard Rowe to Julie D. Taylor—sorted through calendars, press releases, newsletters, and websites to select activities that would be of interest to our members and complement SAH/SCC's own schedule of events. With the advent of the Internet, groups are able to organize and promote events on the fly without relying on old-fashioned editorial deadlines. As a result, we have found that our members are using the calendar less often. Simultaneously, there has arisen a number of Websites that aggregate events and provide more up-to-date information.

To better serve our members, we are now directing you to [www.laforum.org](http://www.laforum.org) for the latest information about architectural and arts-related events. Links to the Los Angeles Forum for Architecture and Urban Design calendar will be provided in our bi-monthly e-news and from our Website, [www.sahscc.org](http://www.sahscc.org).

LA Forum will also send you weekly emails with the "Delirious LA Calendar" of upcoming LA Forum and other design community events. Email [lists@laforum.org](mailto:lists@laforum.org) with the heading "Add me to the Email List" and you'll be on your way to automatically receiving one weekly email with information about LA architecture events.

As always, you'll be able to access a printable .pdf copy of SAH/SCC News from the bi-monthly email you receive from us. Simply click on "Printable PDF of Newsletter" in the "Quick Links" column on the left of the E-News.

You can also check out the new SAH/SCC Facebook page and "like" us, so you and your friends can keep up with the latest news and events for 2011. We look forward to seeing you in the coming year!

Sian Winship



SOCIETY OF ARCHITECTURAL HISTORIANS  
SOUTHERN CALIFORNIA CHAPTER

## Tour and Event Information:

1.800.972.4722;

[info@sahscc.org](mailto:info@sahscc.org)

SAH/SCC NEWS is published bi-monthly by the Society of Architectural Historians / Southern California Chapter. Subscription is a benefit of membership.

**Editor:** Julie D. Taylor, Hon. AIA/LA

**Internet Editor:** Brent Eckerman

**Art Director:** Svetlana Petrovic

**Administration:** Arline Chambers

March/April 2011 issue deadline for newsletter information and ads: February 10, 2011. Please send all ad materials, and news to the attention of the editor:

**Julie D. Taylor**, Editor

SAH/SCC News P.O. Box 56478

Sherman Oaks, CA 91413

Newsletter telephone: 310.247.1099

Newsletter fax: 310.247.8147

Newsletter e-mail: [julie@taylor-pr.com](mailto:julie@taylor-pr.com)

## SAH/SCC Executive Board

Sian Winship (President)

John Ellis (Vice President)

Rina Rubenstein (Membership)

John Berley (Treasurer)

Brent Eckerman (Internet)

Jean Clare Baaden

Laura Friedman

Merry Ovnick

Jay Platt

Adam Wheeler

Dennis Whelan



## Palm Springs Modernism Week

February 17-27, 2011

Join us for 11 Days Celebrating Modernism

Daily Double Decker Bus Tours of World Class Architecture

Exhibits, Seminars & Symposia  
on Preservation, Architecture, Design, Fashion & Interiors

Modernism Show & Sale (extended to four days)

Celebrity Home Tours

Vintage Travel Trailer Show

Architecture + Design Film Series

And Fabulous Parties at Glamorous Locations

Buy your tickets online

[modernismweek.com](http://modernismweek.com)

Presenting Sponsor



Platinum Sponsor



Diamond Sponsor



Media Sponsors

AIRTEAM

modernism

luxé

Palm Springs Life



Photos by Greg Day, Gregg Felsen and Sam Kaufman

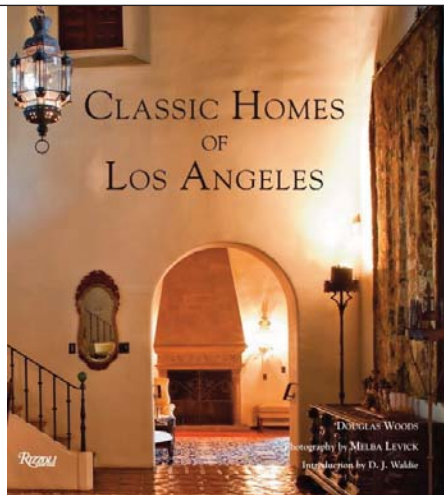


## Bookmarks

### Classic Homes of Los Angeles

By Douglas Woods; photography by Melba Levick; introduction by D.J. Waldie

Let your fingers do the walking through this book, a veritable visual tour of homes deemed “classic” by author Woods. This being Los Angeles, “classic” does not mean just one thing, but encompasses several styles—Tudor, Craftsman, Georgian, Spanish Colonial, and Tuscan. But, as stated in Waldie’s introduction, classic Los Angeles homes are those “that sympathetically embrace the fundamentals of life here: light, air, landscape ... and romance.” The definition for this book is narrowed to homes built from 1899 to 1938, and mostly located in the historic residential core of the city (with guest appearances from Pasadena, San Marino, Beverly Hills, and La Cañada Flintridge). Each home is introduced with a full-spread photograph and short history in text that often describes the personalities of the homeowners more than those of the houses themselves. Not only is the cult of personality such an LA attribute, but it makes it all that more interesting to pore through the interior photos showing eclectic mixes of furniture, art, lighting, materials, and murals. Emphasis on the gardens grants Waldie’s criteria, and happily so, as many of the eccentric interiors could have easily been plucked from East Coast or Midwest robber baron homes. In a city of transplants, who would expect otherwise? Woods’ summaries, for the most part, do include the current state of the home and the restoration architects. My college literature professor defined a classic as “something everyone references, but no one reads.” This book includes homes often referenced—Doheny Mansion, Gamble House, Adamson House, La Miniatura—and makes it possible for all to read about them. *Rizzoli; hardcover; 256 pages; \$55.*



## Preservation on the Edge

### CPF Conference

Santa Monica, May 15-18, 2011

Historic preservation will take center stage in Santa Monica, May 15-19, 2011, as the 36th Annual California Preservation Conference explores provocative topics with the theme “Preservation on the Edge.”

Organized by the California Preservation Foundation (CPF) and supported by local groups, such as SAH/SCC and the LA Conservancy, the conference features dozens of sessions—from seminars and panel discussions to mobile workshops and study tours—that will redefine traditional notions of historic preservation and engage new audiences in setting its course for the future. Specific tracks include:

- Peering Over the Edge: The Future of Historic Preservation
- Redefining the Edge: Conserving Community Character
- The Cutting Edge: Partnerships, Development, and Incentives
- On the LEEDing Edge: Sustainability, Preservation, and Rating Systems
- Gaining the Technical Edge: Innovative Preservation Practices

“While preservationists have always seen the critical role historic preservation plays in economic development, sustainability, community well-being, and other areas, this conference seeks to bring this message into the mainstream and engage the many people who may not think of their efforts as related to preservation,” says Cindy Heitzman, CPF executive director. “Our cultural heritage belongs to all of us, preservation affects all of us, and we all have a role to play in preserving our heritage.”

Check [www.californiapreservation.org](http://www.californiapreservation.org) for more detailed schedules and registration information in the months ahead, or call 415.495.0349.

## SAH/SCC Members

### Life Members

GRANT BARNES  
KYLE C. BARNES  
KATHLEEN BIXLER  
JOHN BLANTON  
MARY DUTTON BOEHM  
MARIE BOTNICK  
BILL BOWLING  
RUTH BOWMAN  
KEN BREISCH & JUDY KELLER  
CHARLOTTE ROSE BRYANT  
BONNIE BURTON  
PAMELA BURTON  
DENIS CAGNA & CARLOS MEDINA  
JOHN & RHONDA CANO  
WENDY CARSON  
EDWARD CELLA  
ROBERT JAY CHATTEL, AIA  
NEIL CLEMMONS & LAURITA GUAICO HARRISON  
TRACY CONRAD  
ELIZABETH COURTIER  
BILL DAMASCHKE & JOHN McILWEE  
CROSBY DE CARTERET DOE & LINDA SOLLIMA DOE  
HEINZ E. ELLERSIECK  
J. RICHARD FARE, AIA, CCS, CSI  
CAROL FENELON  
DONALD R. FERGUSON  
RON FIELDS  
GILBERT & SUKEY GARCETTI  
DR. & MRS. KENNETH GEIGER  
ROBERT GELINAS  
MICHAEL J. GIBSON  
LAMBERT GIESSINGER  
GORDON & JOY GILLIAM  
RAYMOND GIRVIGIAN, FAIA  
PROF. PAUL GLEYE  
GWYNNE GLOEGE  
GEORGE GORSE  
ANDY & LISA HACKMAN  
BRUCE & BETH HALLETT  
STEPHEN HARBY  
ELIZABETH HARRIS  
EUGENE & SHIRLEY HOGGATT  
JAMES & ANNELIESE HORECKA  
ALISON R. JEFFERSON  
WILLIAM H. JOHNSTON  
PAULA JONES  
JONATHAN S. JUSTMAN  
REBECCA KAHN  
DIANE KANE  
STEPHEN A. KANTER, MD  
VIRGINIA ERNST KAZOR  
MARILYN KELLOGG  
LAMAR KERLEY  
THEODORA KINDER  
DON & SALLY KUBLY  
CHARLES A. LAGRECO  
RUTHANN LEHRER  
PAMELA LEVY  
RICHARD LEVY, AIA, APA, & PATRICIA LEVY  
MARTIE LIEBERMAN  
ROBERT LOWER  
JOYCE P. LUDMER  
RANDELL L. MAKINSON  
VITUS MATARÉ & ASSOCIATES  
CHRISTY JOHNSON McAVOY  
ELIZABETH L. McCAFFREY  
MARLENE McCOY  
JUDITH McKEE  
ELIZABETH McMILLIAN  
IRIS MINK  
LE ROY MISURACA  
SUSAN W. MONTEITH  
DOUGLAS M. MORELAND  
SARA G. MULLER CHERNOFF  
DANIEL T. MUÑOZ  
RONALD NESTOR, AIA  
MARK NICHOLS  
PETER A. NIMMER  
JOHN M. NISLEY  
PETER NORTON  
REGINA O'BRIEN  
THOMAS O'CONNOR  
KEVIN ORECK  
POLLY OSBORNE, AIA  
ANNE OTTERSON  
FRANCIS PACKER  
HELEN PALMER  
GEORGE PENNER  
AUDREE PENTON  
RON RADZINER

*continues*



# 6th Annual Modernism Week

Palm Springs, CA, February 17-27, 2011

The 6th Annual Palm Springs Modernism Week annual festival of all things “modern” will be held February 17-27, 2011, in various venues throughout the city. Modernism aficionados and fans can enjoy a variety of entertaining, educational, and exciting events—films, architecture tours, parties, art exhibitions, music, food, and fun.

Each year, new events are added, while the popular audience favorites recur. More than 50 events are scheduled for Modernism Week 2011, including:

- Kick-off celebration in downtown Palm Springs
- West Coast premiere of Braniff Airlines Exhibition of vintage uniforms by designers Pucci and Halston
- Design Lecture Series featuring Karim Rashid, Charles Phoenix, Mayer Rus, and other nationally acclaimed designers and tastemakers
- Lecture and tour with architect William Krisel
- Lectures and panel discussions on Modernism Preservation in Chicago, Miami, Australia, and Cuba
- 11th Annual Palm Springs Modernism Show
- Tours of several fabulous houses (including glamorous celebrity homes)
- Day-long Palm Springs Art Museum symposium and home tour on modernist architect Donald Wexler
- Architecture & Design Film Series
- Lectures on Charles and Ray Eames, Albert Frey
- Daily double-decker bus tours of mid-century architecture
- Vintage Airstream Travel Trailer exhibit
- Curator walk-through of “Steel and Shade: Architecture of Donald Wexler” exhibition

The City of Palm Springs will be the Presenting Sponsor for the 4th year and Riviera Palm Springs will be host hotel as Hospitality Sponsor. Media sponsors are *Palm Springs Life* magazine, *Modernism* magazine, and *Luxe* magazine. For updates and announcements on the 2011 Modernism Week visit [www.modernismweek.com](http://www.modernismweek.com).

## Uniquely Ours: Modern Architects in Bakersfield

Bakersfield Museum of Art , Through March 6, 2011

A new exhibition at the Bakersfield Museum of Art (BFGC-IBI Group Architecture Planning, 2001) focuses on the work of Richard Neutra and Frank Lloyd Wright in beautiful Kern County. Guest curator and SAH/SCC Member Barbara Lamprecht and BMOA curator Vikki Cruz assembled photographs, drawings, furniture, sketches, and letters from UCLA, Dion Neutra, Cal Poly Pomona, and private collectors for an intimate portrait of five projects. “These were wonderful commissions,” says Lamprecht, who will be giving a lecture on Thursday, March 3rd, at 6PM. “Many of us might associate Bakersfield with pit stops, heat, guns, Merle Haggard’s pearly white hat, Buck Owens, oil, agriculture, and Henry Fonda in the *Grapes of Wrath*,” she says. “It’s all that but much, much more—including some really accomplished mid-century work by Bakersfield’s own ‘second generation’ of Modernists in addition to Neutra and Wright.”

According to Lamprecht, highlights include:

- Davis House (1937). A very fine example of Neutra’s 1930s “International Style,” with later renovations by the talented Swiss architect Frank Ghezzi, whose professors at the famed Zurich ETH included critic Siegfried Giedion.
- Leddy House (1958). A “hand-made” Neutra, mostly built by a young dancer and her husband, the county’s district attorney—and still owner-occupied. The rear glass walls of this rustic post-and-beam retreat open to sprawling, lovingly tended gardens and trees.
- Ablin House (1961). Completed two years after Wright’s death for a surgeon and his wife and their large tribe of children, it has been part of the family until recently. Here, a large Usonian design defined by low, angled wings anchors a central, taller core of kitchen and living areas. A Gesamtwerk based on Wright’s characteristic use of the 30- and 60-degree angles, it features a Spartan palette of mahogany, glass, and ornamented, pink-painted concrete block.

“And, not to be missed is a Modernist gas station and the never-exhibited Falcon Flyer Country Club, complete with a story of Neutra’s quick save of a wolf cub,” says Lamprecht.

*Uniquely Ours: Modern Architects in Bakersfield: through March 6, 2011; The Bakersfield Museum of Art, 1930 R Street, 661.323.7219; [www.bmoa.org](http://www.bmoa.org). Lecture: Thursday, March 3rd, 6PM (there are reduced rates for museum goers at the nearby Bakersfield Marriott).*

### Life Members, continued

TOM & PEGGY REAVEY  
JOHN AUGUST REED  
STEVE & SARI RODEN  
CLAIRE ROGGER  
ARTHUR & GLORIA ROSENSTEIN  
ROB ROTHBLATT  
RICHARD CAYIA ROWE  
JEFFREY B. SAMUDIO  
TRUDI SANDMEIER  
STEVEN SAUTE  
LAWRENCE SCARPA  
ELEANOR SCHAPA  
ANN SCHEID  
JAMES M. SCHWENTKER III  
PATRICIA SIMPSON  
CECILIA SINGER  
MARK SLOTKIN  
CORBIN SMITH  
GIBBS M. SMITH  
NANCY & KYLE SMITH  
JANANN STRAND  
CAROLYN STRAUSS  
LYNN MARIE SULLIVAN  
VERN SWANSEN  
MARIE TARTAR & STEVE EILENBERG  
REGINALD THATCHER  
RAUN THORP  
M. BRIAN TICHENOR, AIA  
A. TISCHLER  
SARAH FLYNN TUDOR  
MAGGIE VALENTINE  
DANIEL VISNICH  
WOLFGANG WAGENER & LESLIE ERGANIAN  
ROBERT D. WALLACE  
QUINCY WARGO  
JOHN & LORI WARNKE  
ERIC & KAREN WARREN  
DR. PATRICIA A. WARREN  
RON WATSON  
DAVID R. WEAVER  
JOHN H. WELBORNE, Hon. AIA/LA  
TED W. WELLS  
VOLKER M. WELTER  
DR. ROBERT WINTER  
TERI SUE WOLF  
MR. & MRS. DAVID YAMADA  
BOB YOUNG  
JOYCE ZAITLIN  
DAWN SOPHIA ZIEMER  
STEVEN ZIMBELMAN  
ANNE ZIMMERMAN & MARK PIAIA

### Patron Members:

DON BENSEN  
HARRIET BORSON  
DONALD & JUDITH BRODER  
STEVE & MARIAN DODGE  
PAUL DOLANSKY  
MICHAEL & CAROLE DOUGHERTY  
ENID & GARY FREUND  
LISA GIMMY  
STEVE GLENN  
HERB & ELLEN GROELINGER  
DIANA HAWES  
DWAYNE HOWARD  
ALVIN Y. LEE  
CAROL LEMLEIN & ERIC NATWIG  
ARTHUR LIU  
CATHERINE MEYLER  
ROXANNE MODJALLAL  
DAVID SCHROEDER  
MICHAEL R. SOMIN, AIA  
DANIEL SULLIVAN, AIA, & ALBERT GENTLE  
JOHN C. TERELL  
PETER VAN DER KAR & LLOYD MALANI

### New Patron Members:

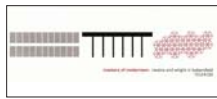
Catherine Meyler

### New Members:

George Abe  
Larry Bamberger  
Eva Barris  
Bob Borthwick  
John Carney  
Robert Hemedes  
Christine Hoeffner  
Reuben E. Jacobs  
Lynne & Ron Kaufman  
Michael & Donna Locke  
Shemiki Petties  
John Rail  
Kim Sandoval  
Kathy Soulek  
Clive Whitcher  
Angela Wong



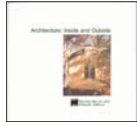
# SAH/SCC PUBLICATIONS



\_\_\_\_\_ at \$5 each  
**Masters of Modernism:** 8-Page, two-color brochure featuring works of Richard Neutra and Frank Lloyd Wright in Bakersfield.



\_\_\_\_\_ at \$3 each  
**Paul Tay, Architect:** 4"x 8" color brochure featuring five modern ranch-style homes in Long Beach



\_\_\_\_\_ at \$3 each  
**Architecture: Inside and Outside:** 5"x5" folded color brochure featuring Santa Barbara's Lotusland, Casa del Herrero, and Val Verde



\_\_\_\_\_ at \$12 each  
**Out of the Shadow:** 24-page, two-color brochure from Phoenix travel tour featuring the work of Frank Lloyd Wright, Al Beadle, Blaine Drake, Paolo Soleri, Edward B. Sawyer, Bennie Gonzales, and Will Bruder



\_\_\_\_\_ at \$3 each  
**A Block in Glendale:** pocket-size fandek of cards featuring five diverse properties—including a Paul Williams residence—plus historical background information on the Brockmont Heights subdivision



\_\_\_\_\_ at \$8 each  
**Rodney Walker 3 30 90:** 12-page brochure featuring nine homes on five sites, as well as the architect's use of the three-foot module



\_\_\_\_\_ at \$8 each  
**Space and Learning:** eight-page, four-color brochure on the historical and contemporary legacy of LA school architecture, featuring projects by Richard Neutra, Thom Mayne, Rios Clementi Hale Studios, and others



\_\_\_\_\_ at \$5 each  
**Rodney Walker: The Ojai Years:** tri-fold, black-and-white brochure featuring Walker's important residences in Ojai, with pictures and article by historian David Mason



\_\_\_\_\_ at \$2 each  
**Kesling Homes:** bi-fold, two-color brochure from the "Kesling Modern Structures" tour



\_\_\_\_\_ at \$2 each  
**Union Station and MTA Transit Center:** bi-fold map for a self-guided walking tour including historical facts and photos



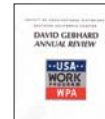
\_\_\_\_\_ at \$10 each  
**Modernism for the Masses:** tri-fold brochure with inserts of detailed floor plans of Eichler homes visited on the Orange County tour



\_\_\_\_\_ at \$10 each  
**The Historic and Modern Spirit of Ventura:** 20-page guide from Ventura tour



\_\_\_\_\_ at \$10 each  
**Reconsidering Lloyd Wright:** 21-page, four-color booklet from "Reconsidering Lloyd Wright" house tour



\_\_\_\_\_ at \$5 each  
**David Gebhard Review:** essays on the Works Project Administration by Robert W. Winter, Orville O. Clarke, Jr., and Mitzi March Mogul



\_\_\_\_\_ at \$7 each  
**On Parallel Lines: The Sarasota Modern Movement 1948-1966:** 26-page brochure featuring Sarasota School architects.

**SUB-TOTAL**

(\$1 postage fee will be added to all orders)

**TOTAL**

check enclosed (Make checks payable to SAH/SCC)

charge my credit card:

VISA

MC

Street \_\_\_\_\_

City \_\_\_\_\_

State \_\_\_\_\_ Zip \_\_\_\_\_

Daytime phone \_\_\_\_\_ Evening phone \_\_\_\_\_

Card Number \_\_\_\_\_ Expiration Date \_\_\_\_\_

Signature \_\_\_\_\_

Name \_\_\_\_\_

E-mail Address\* (PLEASE PRINT) \_\_\_\_\_

**Send to:** SAH/SCC, P.O. Box 56478, Sherman Oaks, CA 91413

\*SAH/SCC PRIVACY POLICY: SAH/SCC never sells, rents, or shares your mailing or email address. Electronic communications enable us to operate economically and efficiently.

# SAH/ORDER FORM

## JOIN OR RENEW TODAY!

SAH/SCC is a 501c 3 nonprofit organization dedicated to providing its members with opportunities to learn about and experience the rich architectural heritage of Southern California and beyond. Our volunteer board members create tours, lectures, travel tours, and other events that explore the ideas behind the architecture as well as the buildings that result from them. From modern to craftsman, from Spanish Colonial to contemporary, our programs are the best-kept secrets in Southern California!

## MEMBERSHIP BENEFITS:

- Advance notice of all SAH/SCC events—important because they usually sell out just to members
- 20-30% discounts on tour and event ticket prices
- Bi-monthly E-news with printable newsletter and calendar
- FREE tickets to our annual Members' Celebration event
- Special Members-Only E-Alerts about upcoming events
- A tax deduction for your membership dues
- The knowledge that you are supporting our mission to increase public awareness of Southern California's architectural heritage

## MEMBERSHIP LEVELS THAT FIT YOUR NEEDS!

Fill out the order form below or join online at [www.sahscc.org](http://www.sahscc.org).

**\$45 Individual** - All the membership benefits above for a single individual.

**\$65 Dual** - All the membership benefits for two names at the same address.

**\$125 Patron** - All the membership benefits above, plus priority reservation at our popular and exclusive "Patrons Only" programs, such as "Modern Patrons" and "Contemporary Patrons." Includes two names at the same address.

**\$650 Life** - A one-time donation that ensures your membership in perpetuity without the expense and inconvenience of annual renewal. Also includes priority reservation at our popular and exclusive "Patrons Only" programs.

**\$500 Corporate Sponsorship** - Annual donation receives Sponsorship listing in the SAH/SCC Website and on SAH/SCC event publications and hyperlink from our Website to yours.

**\$30 Student** (requires scan of valid Student ID) - All the benefits of Individual membership at a 30% discount.

# SAH/SCC MEMBERSHIP

\_\_\_\_\_ Individual membership at \$45 each = \$ \_\_\_\_\_  
\_\_\_\_\_ Dual membership at \$65 each  
(two names at same address) = \$ \_\_\_\_\_  
\_\_\_\_\_ Patron membership at \$125 each  
(two names at same address) = \$ \_\_\_\_\_  
\_\_\_\_\_ Life membership at \$650 each = \$ \_\_\_\_\_  
\_\_\_\_\_ Corporate membership at \$500 each = \$ \_\_\_\_\_  
\_\_\_\_\_ Student membership at \$30 each = \$ \_\_\_\_\_  
Total Membership = \$ \_\_\_\_\_

- check enclosed (Make checks payable to SAH/SCC)  
 charge my credit card:  VISA  MC

Card Number \_\_\_\_\_ Expiration Date \_\_\_\_\_

Signature \_\_\_\_\_

Name \_\_\_\_\_

E-mail Address\* (PLEASE PRINT) \_\_\_\_\_

Street \_\_\_\_\_

City \_\_\_\_\_

State \_\_\_\_\_ Zip \_\_\_\_\_

Daytime phone \_\_\_\_\_ Evening phone \_\_\_\_\_

**Send to:** SAH/SCC, P.O. Box 56478, Sherman Oaks, CA 91413

**All event ticket sales are final.**

**We are sorry, refunds cannot be accommodated.**

**\*SAH/SCC PRIVACY POLICY:** The SAH/SCC never sells, rents, or shares your mailing or email address. Electronic communications enable us to operate economically and efficiently.